

LITHOCAM II & LithoCAM Lite II



- Halftone and Stochastic
- Metal and Polyester Plate Dots
- Film Dots
- Printed Dots
- Geometric Analysis
- Real Image Display

IHARA

LITHOCAM II & lithocam lite ii

Description of the LithoCAM:

LithoCAM is an essential part of any Ctp or image-setter installation and a must for print quality checks.

LithoCAM application is PC based and therefore able to process more data resulting in increased accuracy and functionality.

Its powerful software measures dot area automatically in less than 1 second and offers a full complement of measuring tools: *Image Micrometer*; *Screen Ruling Calculator*, *Screen Angle Analyzer*, as well as an *oscillogram* (for plate quality analysis). Images and data can be printed as well as imported directly into the users host RIP to calibrate the plate/firm setter.

LithoCAM is an ideal quality control tool for printed copy, identifying slur issues, ink/water imbalances and print doubling, thereby saving hours of time in the press-room; and for plates identifying processor problems, chemical issues, plate coating and handling issues, and laser problems; these are all areas where LithoCAM users benefit by quickly identifying problems, and therefore saving time and cost.

Description of the LithoCAM lite:

Designed especially for the needs of platesetter or imagesetter users and manufacturers, the LithoCAM lite is an essential part of any Ctp/ imagesetter installation. This PC driven application ensures accurate readings and shows a grayscale display of the area of readings. LithoCAM lite benefits from the use of a modified web camera to keep the cost low, whilst keeping the accuracy high with this fast and easy to use application.

LITHOCAM II & LITHOCAM LITE II PRODUCT SPECIFICATIONS

| Features | LithoCAM II | LithoCAM Lite II |
|---|-------------|------------------|
| Media | | |
| Film | • | • |
| Offset Plates (Metal & Polyester) | • | • |
| Printed copy (visual perception readings) | • | |
| Dot Evaluation | | |
| Halftone dots: 100 lpi-300 lpi | • | • |
| Stochastic dots (FM) from 10 micron | • | • |
| Accuracy +- 0.5% over full range of readings (10-micron accuracy +- 1%) | • | • |
| Plate analysis | • | |
| Measuring time:< 1 second | • | • |
| Geometric measurements | • | |
| Dot gain calculation (mechanical) | • | |
| Interface | | |
| Numeric %- display | • | • |
| Dynamic graphic display | • | • |
| Screen angle/ ruling calculation | • | |
| High speed USB link | • | • |
| Positive/ Negative reading | • | • |
| Optical Range | | |
| Field of view approx. 1.6 x 1.2mm | • | • |
| 640 x 480 Pixel RGB 24-Bit Colour-CCD | • | • |
| Connectivity & Storage | | |
| JPEG, BMP or LCD file formats | • | |
| Direct applicatoin interface (RIPs, spreadsheets, etc) | • | |
| Light Source | | |
| White light LED | • | • |
| Powered from PC- no batteries needed | • | • |

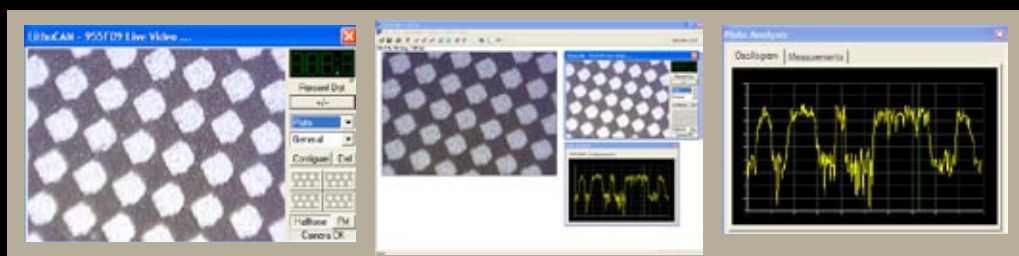
IHARA

Ihara U.S., Inc.
25030 Avenue Tibbitts, Building K
Valencia, California 91355-9877 USA
Tel: +1 661-257-5772
Fax: +1 661-257-5880
www.iharaus.com

World Headquarters:
Ihara Electronic Industries Co., Ltd.
2077 Kamitaraga-Cho
Kasugai City, Aichi 486 Japan
Tel: 0568-81-6824
Fax: 0568-81-6040
www.ihara-group.com

Sales Office:
Asia & Oceania:
+81 0568-76-7878

All other countries:
+1 661-257-5772



design by: Douroux Graphics
email: LDouroux4@gmail.com